

Chicago by the Numbers Revised 01/15/2015

8,233 

New Jobs-City
YOY growth, Nov 2014

11.9% 

New Auto Sales-Nt'l
YOY Growth, Dec 2014

78.9% 

Res. Building Permits-City
YOY growth, Nov 2014

11.6% 

Air Cargo-City
YOY Growth, Nov 2014

Employment

YOY job growth by industry, City, Nov-2014

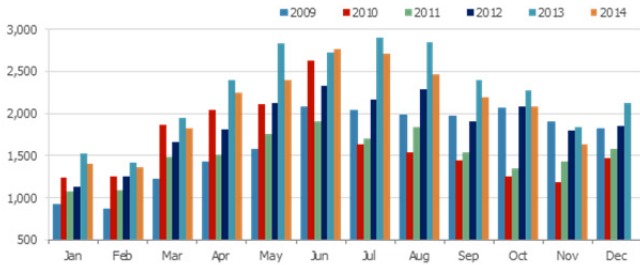
Professional & Bus. Services	1.6%	4,289
Education & Health	1.4%	3,263
Transp., Whsg. & Utilities	2.7%	1,930
Construction	5.5%	1,492
Wholesale	1.3%	612
Information	1.3%	425
Manufacturing	0.3%	215
Government	0.0%	89
Natural Resources & Mining	-8.1%	-21
Other Services	-0.3%	-173
Leisure & Hospitality	-0.6%	-742
Financial Activities	-1.1%	-1,374
Retail	-1.7%	-1,682

Unemployment rate, select cities, Nov-2014

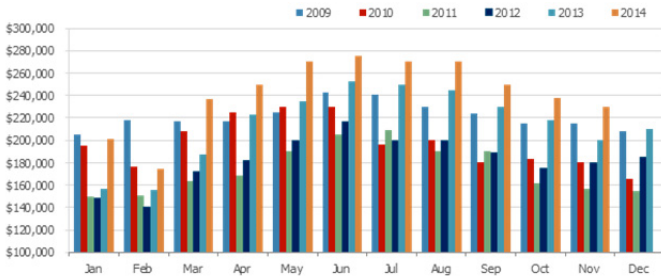
Los Angeles	8.8%
Chicago	6.8%
New York	6.6%
Houston	4.6%

Real Estate

Monthly home sales, City, Nov-2014

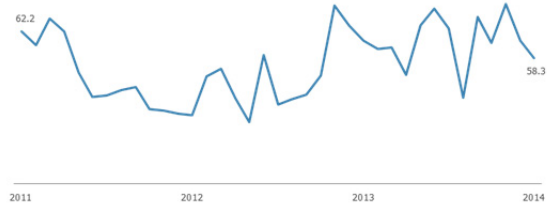


Median home sale price, City, Nov-2014

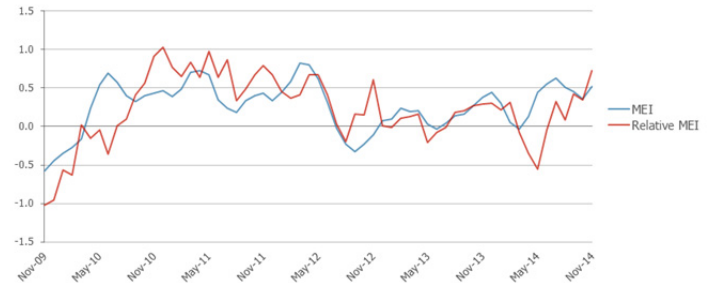


Business Activity

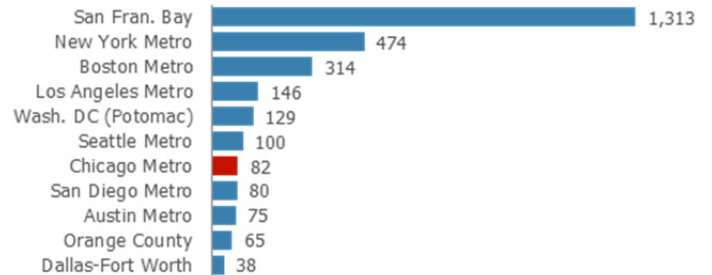
Chicago Business Barometer, Dec-2014



Midwest Economy Index, Nov-2014

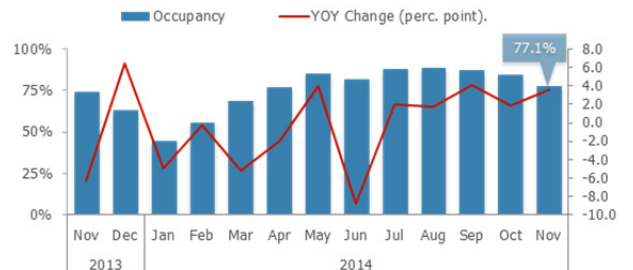


Investment deals with VC-backed companies, 2014



Tourism

Hotel Occupancy, City, Nov-2014





Chicago by the Numbers Revised 01/15/2015

Indicator	Date	Month/Quarter		
		Most Recent	Year Earlier	Yr-On-Yr Chg
Employed residents (1,000)-City	Nov-14	1,183.1	1,150.7	2.8%
Employed residents (1,000)-MSA	Nov-14	4,613.7	4,485.2	2.9%
Labor force (1,000)-City	Nov-14	1,268.9	1,276.2	-0.6%
Labor force (1,000)-MSA	Nov-14	4,897.6	4,888.4	0.2%
Unemployment rate-City	Nov-14	6.8	9.8	-3.1
Unemployment rate-MSA	Nov-14	5.8	8.2	-2.4
Labor force participation rate-statewide	Nov-14	64.9	65.1	-0.2
Total private payroll jobs (1,000)-City	Nov-14	1,187.0	1,178.8	0.7%
<i>Natural Resources & Mining</i>	Nov-14	0.2	0.3	-8.1%
<i>Construction</i>	Nov-14	28.7	27.2	5.5%
<i>Manufacturing</i>	Nov-14	63.2	63.0	0.3%
<i>Wholesale trade</i>	Nov-14	47.3	46.7	1.3%
<i>Retail Trade</i>	Nov-14	98.5	100.2	-1.7%
<i>Transportation, Warehousing, & Utilities</i>	Nov-14	74.5	72.6	2.7%
<i>Information</i>	Nov-14	33.9	33.5	1.3%
<i>Financial Activities</i>	Nov-14	128.2	129.5	-1.1%
<i>Professional & Business Services</i>	Nov-14	276.9	272.6	1.6%
<i>Educational & Health Services</i>	Nov-14	239.8	236.6	1.4%
<i>Leisure & Hospitality</i>	Nov-14	129.7	130.4	-0.6%
<i>Other Services</i>	Nov-14	66.1	66.3	-0.3%
<i>Government</i>	Nov-14	178.6	178.6	0.0%
Unemployment insurance claims-Cook County	Nov-14	18,490	18,985	-2.6%
New hires (1,000, seas. adjusted)-Midwest	Nov-14	1,226	1,022	20.0%
Online job postings-Cook County	Q3-2014	139,173*	N/A*	N/A*
Leading Economic Index (2004=100)-Nt'l	Nov-14	105.5	98.3	7.2
Consumer Sentiment Index-Nt'l	Dec-14	93.6	82.5	11.1
Consumer Confidence (1985=100)-Nt'l	Dec-14	92.6	77.5	15.1
Architecture Billings Index-Nt'l	Nov-14	50.9	49.8	1.1
Producer Price Index (1982=100, seas. adjusted)-Nt'l	Nov-14	199.2	197.2	2.0
New automobile sales (millions, seas. adjusted)-Nt'l	Dec-14	473.7	423.2	11.9%
New truck sales (millions, seas. adjusted)-Nt'l	Dec-14	723.9	623.1	16.2%
Freight Transportation Services Index (2000=100)-Nt'l	Oct-14	121.8	116.4	5.4
Midwest Economy Index-Midwest	Nov-14	0.52	0.38	0.14
Exports (\$B)-State of Illinois	Nov-14 YTD	62.8	60.3	4.1%
GRP (est., 2014 \$B)-MSA	2014	572.7	566.1	1.2%

EMPLOYMENT

BUSINESS ACTIVITY

Green = Improving; Red = Worsening

(cont.)

Chicago by the Numbers Revised 01/15/2015

	Indicator	Date	Month/Quarter		
			Most Recent	Year Earlier	Yr-On-Yr Chg
BUSINESS ACTIVITY	Chicago Business Barometer (seas. adjusted)-MSA	Dec-14	58.3	59.1	-0.8
	Consumer Price Index (CPI-U; 1982-84=100)-CMSA	Nov-14	227.2	223.7	3.5
	Air cargo tonnage-ORD+MDW	Nov-14	155,467	139,321	11.6%
	Venture capital rounds-MSA	2014	82	87	-5.7%
	Venture capital investment (\$M)-MSA	2014	862.3	496.8	73.6%
	Major business expansions-City	Dec-14 YTD	264	N/A	N/A
	Major business expansions-MSA	Dec-14 YTD	635	N/A	N/A
	Digital startup funding (\$M)-MSA	Q2 2014	311	147	111.6%
	Active manufacturing licenses-City	Dec-14	959	955	0.0%
REAL ESTATE	Population (millions)-City	Jul-13	2.719	2.713	0.2%
	Population (millions)-MSA	Jul-13	9.537	9.514	0.2%
	Cost of Living Index-City	Q3 2014	114.4	117.4	-3.0
	Case Shiller Home Price Index-MSA	Oct-14	129.9	127.4	2.4
	New private residential building permits (units)-City	Nov-14 YTD	4,990	2,789	78.9%
	New private residential building permits (units)-MSA	Nov-14 YTD	13,730	11,048	24.3%
	Housing starts (1,000)-Midwest	Nov-14 YTD	183	216	-15.3%
	Home sales-City	Nov-14	1,632	1,844	-11.5%
	Median home sale price (\$)-City	Nov-14	230,000	200,000	15.0%
TOURISM	Office vacancy rate-downtown	Q3 2014	13.1	13.7	-0.6
	Office vacancy rate-suburbs	Q3 2014	19.0	19.9	-0.9
	Annual visitors (millions)-City	2013	48.48	46.51	4.2%
	Hotel occupancy rate-City	Nov-14	77.1	73.5	3.6
	Hotel average daily rate (\$)-City	Nov-14	215.32	186.40	15.5%
Air passengers (millions)-ORD+MDW	Nov-14	7.21	6.90	4.6%	

Green = Improving; Red = Worsening

Footnotes and Sourcing

*Data provider is continually expanding its data collection, so total growth in total ad volume over time cannot be attributed entirely to an increase in labor demand

Data is current as of 01/15/2015; preliminary estimates are subject to revision. Data is not adjusted for seasonality unless noted. The Chicago MSA (metropolitan statistical area) consists of a 14-county, tri-state region: Cook, DeKalb, DuPage, Grundy, Kane, Kendall, Lake, McHenry, and Will counties in Illinois; Jasper, Lake, Newton, and Porter counties in Indiana; and Kenosha County in Wisconsin. Midwest data reflects totals for Illinois, Indiana, Iowa, Kansas, Michigan, Minnesota, Missouri, Nebraska, North Dakota, Ohio, South Dakota, and Wisconsin. The Freight Transportation Services Index is a measure of the month-to-month changes in the output of for-hire freight transportation service providers including trucking, rail, inland waterway vessels, pipeline, and air freighters; the index does not include international or coastal movements, private trucking, courier services, or the U.S. Postal Service. State of Illinois exports are measured by the U.S. Census HS origin of production state-based series. Venture capital refers to cash investments by corporations and individuals into companies that have received at least one round of venture funding. **Sources** (in order of reference): Illinois Department of Employment Security, U.S. Bureau of Labor Statistics, Chicago-Cook Workforce Partnership analysis of Burning Glass data, The Conference Board, Thomson Reuters/University of Michigan, American Institute of Architects, U.S. Bureau of Economic Analysis, U.S. Bureau of Transportation Statistics, Federal Reserve Bank of Chicago, USA Trade Online, Moody's Analytics, Institute for Supply Management, Chicago Department of Aviation, DJX VentureSource, World Business Chicago, Built in Chicago, City of Chicago, U.S. Census Bureau, Council for Community and Economic Research, S&P Dow Jones, Illinois Association of Realtors, CBRE, Choose Chicago analysis of Smith Travel Research data