


Chicago by the Numbers Revised 02/10/2015

8,710 
New Jobs-City
YOY growth, Dec 2014

12.3% 
New Auto Sales-Nt'l
YOY Growth, Jan 2015

90.1% 
Res. Building Permits-City
YOY growth, Dec 2014

10.2% 
Air Cargo-City
YOY Growth, Dec 2014

Employment

YOY job growth by industry, City, Dec-2014

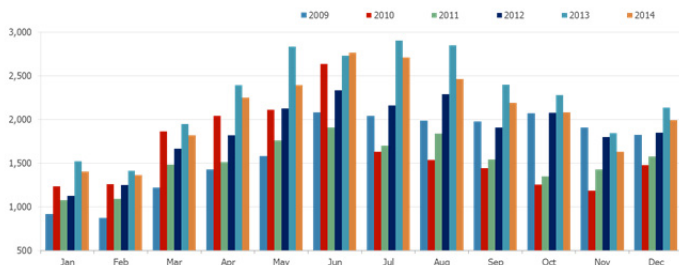
Professional & Bus. Services	1.8%	4,891
Education & Health	1.6%	3,963
Transp., Whsg. & Utilities	2.7%	1,962
Construction	4.4%	1,151
Wholesale	1.5%	707
Information	0.9%	302
Manufacturing	0.2%	99
Natural Resources & Mining	-11.0%	-27
Other Services	-0.2%	-103
Leisure & Hospitality	-0.2%	-201
Government	-0.3%	-483
Financial Activities	-1.1%	-1,399
Retail	-2.1%	-2,153

Unemployment rate, select cities, Dec-2014

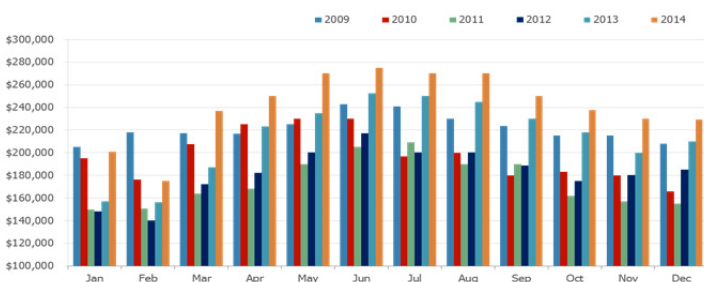
Los Angeles	8.3%
New York	6.4%
Chicago	6.2%
Houston	4.1%

Real Estate

Monthly home sales, City, Dec-2014

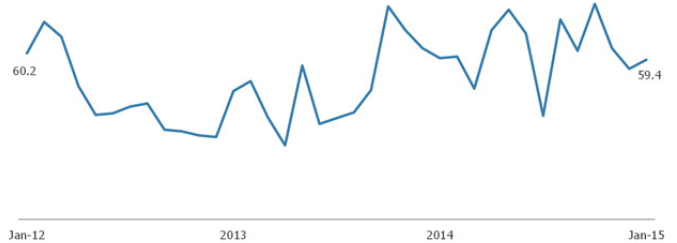


Median home sale price, City, Dec-2014

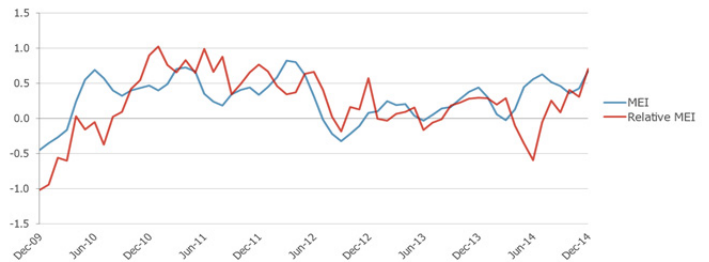


Business Activity

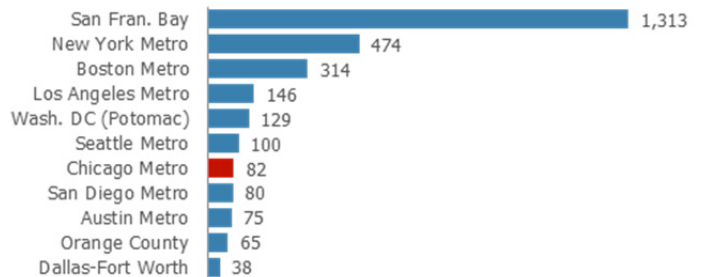
Chicago Business Barometer, Jan-2015



Midwest Economy Index, Dec-2014

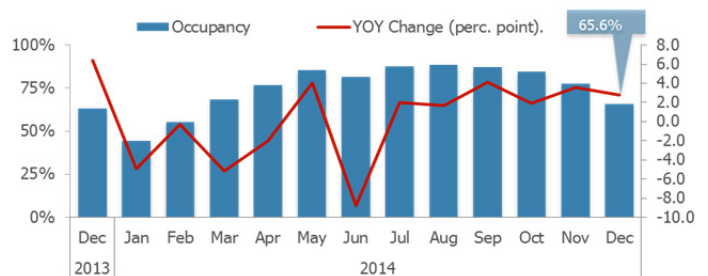


Investment deals with VC-backed companies, 2014



Tourism

Hotel Occupancy, City, Dec-2014





Chicago by the Numbers Revised 02/10/2015

Indicator	Date	Month/Quarter		
		Most Recent	Year Earlier	Yr-On-Yr Chg
Employed residents (1,000)-City	Dec-14	1,185.3	1,147.3	3.3%
Employed residents (1,000)-MSA	Dec-14	4,609.9	4,469.9	3.1%
Labor force (1,000)-City	Dec-14	1,263.4	1,268.1	-0.4%
Labor force (1,000)-MSA	Dec-14	4,882.9	4,872.4	0.2%
Unemployment rate-City	Dec-14	6.2	10.2	-4.0
Unemployment rate-MSA	Dec-14	5.6	8.3	-2.7
Labor force participation rate-statewide	Dec-14	64.9	65.1	-0.2
Total nonfarm payroll jobs (1,000)-City	Dec-14	1,375.6	1,366.9	0.6%
<i>Natural Resources & Mining</i>	<i>Dec-14</i>	<i>0.2</i>	<i>0.2</i>	<i>-11.0%</i>
<i>Construction</i>	<i>Dec-14</i>	<i>27.1</i>	<i>25.9</i>	<i>4.4%</i>
<i>Manufacturing</i>	<i>Dec-14</i>	<i>64.2</i>	<i>64.1</i>	<i>0.2%</i>
<i>Wholesale trade</i>	<i>Dec-14</i>	<i>47.7</i>	<i>46.9</i>	<i>1.5%</i>
<i>Retail Trade</i>	<i>Dec-14</i>	<i>100.0</i>	<i>102.2</i>	<i>-2.1%</i>
<i>Transportation, Warehousing, & Utilities</i>	<i>Dec-14</i>	<i>74.8</i>	<i>72.8</i>	<i>2.7%</i>
<i>Information</i>	<i>Dec-14</i>	<i>34.2</i>	<i>33.9</i>	<i>0.9%</i>
<i>Financial Activities</i>	<i>Dec-14</i>	<i>128.7</i>	<i>130.1</i>	<i>-1.1%</i>
<i>Professional & Business Services</i>	<i>Dec-14</i>	<i>277.0</i>	<i>272.1</i>	<i>1.8%</i>
<i>Educational & Health Services</i>	<i>Dec-14</i>	<i>244.8</i>	<i>240.8</i>	<i>1.6%</i>
<i>Leisure & Hospitality</i>	<i>Dec-14</i>	<i>131.6</i>	<i>131.8</i>	<i>-0.2%</i>
<i>Other Services</i>	<i>Dec-14</i>	<i>66.9</i>	<i>67.0</i>	<i>-0.2%</i>
<i>Government</i>	<i>Dec-14</i>	<i>178.5</i>	<i>179.0</i>	<i>-0.3%</i>
Unemployment insurance claims-Cook County	Jan-15	23,070	25,325	-8.9%
New hires (1,000, seas. adjusted)-Midwest	Dec-14	1,174	1,053	11.5%
Online job postings-Cook County	Q4-2014	123,469*	N/A*	N/A*
Leading Economic Index (2004=100)-Nt'l	Dec-14	121.1	99.4	21.7
Consumer Sentiment Index-Nt'l	Jan-15	98.1	81.2	16.9
Consumer Confidence (1985=100)-Nt'l	Jan-15	102.9	79.4	23.5
Architecture Billings Index-Nt'l	Dec-14	52.2	48.6	3.6
Producer Price Index (1982=100, seas. adjusted)-Nt'l	Dec-14	196.7	198.0	-1.3
New automobile sales (millions, seas. adjusted)-Nt'l	Jan-15	383.0	341.1	12.3%
New truck sales (millions, seas. adjusted)-Nt'l	Jan-15	532.4	444.5	19.8%
Freight Transportation Services Index (2000=100)-Nt'l	Nov-14	123.2	119.0	4.2
Midwest Economy Index-Midwest	Dec-14	0.67	0.43	0.24
Exports (\$B)-State of Illinois	Dec-14 YTD	68.2	66.1	3.2%
GRP (est., 2014 \$B)-MSA	2014	562.1	558.3	0.7%

EMPLOYMENT

BUSINESS ACTIVITY

Green = Improving; Red = Worsening

(cont.)

Chicago by the Numbers Revised 02/10/2015

	Indicator	Date	Month/Quarter		
			Most Recent	Year Earlier	Yr-On-Yr Chg
BUSINESS ACTIVITY	Chicago Business Barometer (seas. adjusted)-MSA	Jan-15	59.4	59.6	-0.2
	Consumer Price Index (CPI-U; 1982-84=100)-MSA	Dec-14	226.3	223.0	3.3
	Air cargo tonnage-ORD+MDW	Dec-14	141,420	128,313	10.2%
	Venture capital rounds-MSA	2014	82	87	-5.7%
	Venture capital investment (\$M)-MSA	2014	862.3	496.8	73.6%
	Major business expansions-City	2014	264	N/A	N/A
	Major business expansions-MSA	2014	634	N/A	N/A
	Digital startup funding (\$M)-MSA	2014	311	147	111.6%
	Active manufacturing licenses-City	Feb-15	910	927	-1.8%
REAL ESTATE	Population (millions)-City	Jul-13	2.719	2.713	0.2%
	Population (millions)-MSA	Jul-13	9.537	9.514	0.2%
	Cost of Living Index-City	2014	116.7	115.3	1.4
	Case Shiller Home Price Index-MSA	Nov-14	128.4	125.9	2.5
	New private residential building permits (units)-City	Dec-14 YTD	5,750	3,025	90.1%
	New private residential building permits (units)-MSA	Dec-14 YTD	15,745	11,783	33.6%
	Housing starts (1,000)-Midwest	Dec-14 YTD	163	155	5.2%
	Home sales-City	Dec-14	1,992	2,137	-6.8%
	Median home sale price (\$)-City	Dec-14	229,250	210,000	9.2%
TOURISM	Office vacancy rate-downtown	Q4 2014	12.6	13.4	-0.8
	Office vacancy rate-suburbs	Q4 2014	18.9	20.0	-1.1
	Annual visitors (millions)-City	2014	50.15	48.48	3.4%
	Hotel occupancy rate-City	Dec-14	65.6	62.8	2.8
	Hotel average daily rate (\$)-City	Dec-14	165.15	164.01	0.7%
Air passengers (millions)-ORD+MDW	Dec-14	7.44	7.13	4.3%	

Green = Improving; Red = Worsening

Footnotes and Sourcing

*Data provider is continually improving its collection method, so growth is not directly attributable to an increase in labor demand

Data is current as of 02/10/2015; preliminary estimates are subject to revision. Data is not adjusted for seasonality unless noted. The Chicago MSA (metropolitan statistical area) consists of a 14-county, tri-state region: Cook, DeKalb, DuPage, Grundy, Kane, Kendall, Lake, McHenry, and Will counties in Illinois; Jasper, Lake, Newton, and Porter counties in Indiana; and Kenosha County in Wisconsin. Midwest data reflects totals for Illinois, Indiana, Iowa, Kansas, Michigan, Minnesota, Missouri, Nebraska, North Dakota, Ohio, South Dakota, and Wisconsin. The Freight Transportation Services Index is a measure of the month-to-month changes in the output of for-hire freight transportation service providers including trucking, rail, inland waterway vessels, pipeline, and air freighters; the index does not include international or coastal movements, private trucking, courier services, or the U.S. Postal Service. State of Illinois exports are measured by the U.S. Census HS origin of production state-based series. Venture capital refers to cash investments by corporations and individuals into companies that have received at least one round of venture funding. **Sources** (in order of reference): Illinois Department of Employment Security, U.S. Bureau of Labor Statistics, Chicago-Cook Workforce Partnership analysis of Burning Glass data, The Conference Board, Thomson Reuters/University of Michigan, American Institute of Architects, U.S. Bureau of Economic Analysis, U.S. Bureau of Transportation Statistics, Federal Reserve Bank of Chicago, USA Trade Online, Moody's Analytics, Institute for Supply Management, Chicago Department of Aviation, DJX VentureSource, World Business Chicago, Built in Chicago, City of Chicago, U.S. Census Bureau, Council for Community and Economic Research, S&P Dow Jones, Illinois Association of Realtors, CBRE, Choose Chicago analysis of Smith Travel Research data