

Chicago by the Numbers Revised August 17, 2015

15,294 

New Jobs-City
YOY Growth, June 2015

109 

Business Expansions-City
August 2015 YTD

9.3% 

Home Sales-City
YOY Growth, June 2015

7.1% 

Air Passengers-City
YOY Growth, June 2015

Employment

YOY job growth by industry, city, June 2015

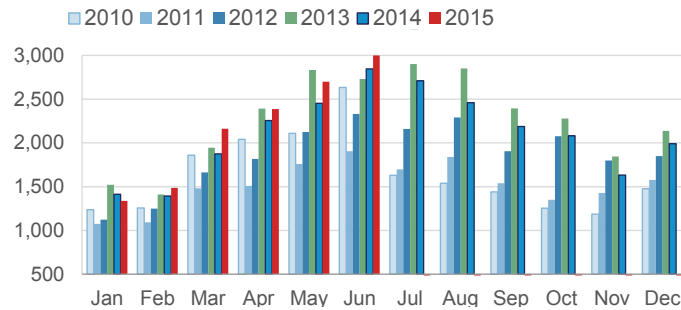
Education & health services	3.7%	8,782
Professional & bus. services	2.9%	8,227
Transportation, whsg., & utilities	2.9%	2,069
Retail trade	1.7%	1,676
Leisure & hospitality	0.5%	728
Construction	2.6%	692
Information	1.1%	381
Wholesale trade	0.2%	113
Natural resources & mining	8.2%	20
Other services	-3.1%	-2,159
Manufacturing	-3.5%	-2,253
Financial activities	-2.3%	-2,982

Unemployment, select cities, June 2015

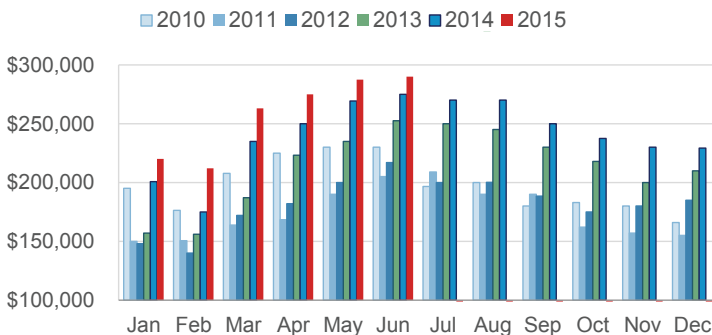
Los Angeles	7.7%	Chicago	6.9%
New York	5.7%	Houston	4.2%

Real Estate

Monthly home sales, city, 2010-2015

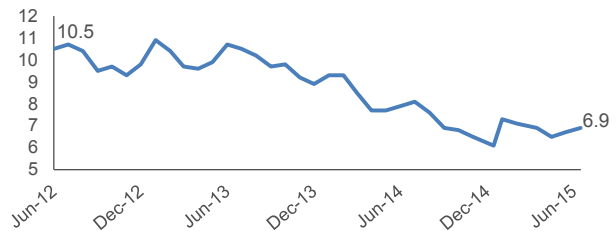


Median home sale price, city, 2010-2015

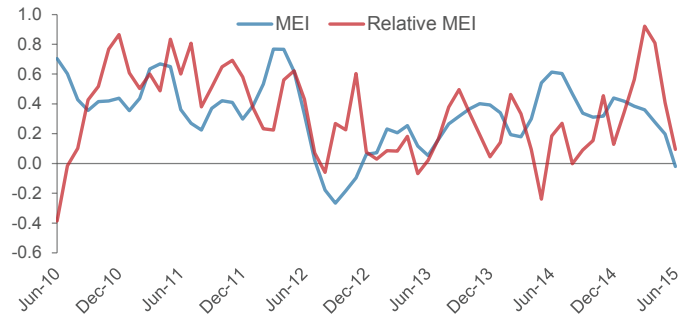


Business Activity

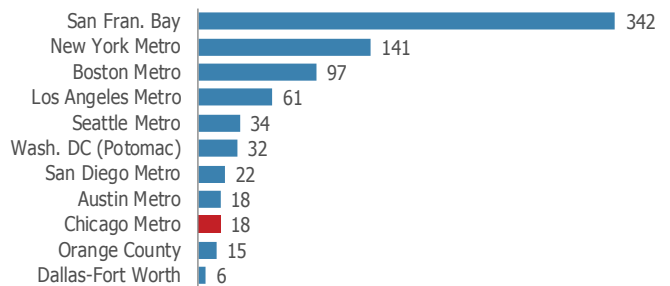
Unemployment rate, city, 2012-2015



Midwest Economy Index, 2010-2015

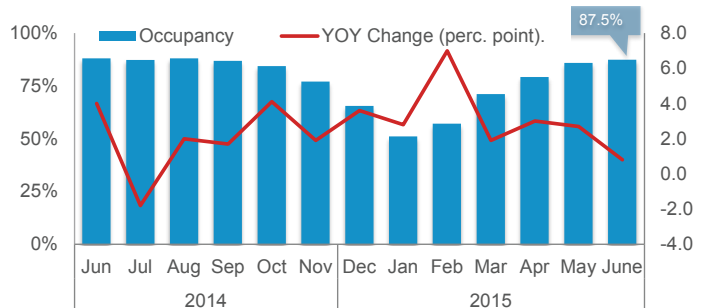


Investment deals with VC-backed co's, Q2 2015



Tourism

Average occupancy, Chicago hotels, 2014-2015



Indicator	Date	Month/Quarter		
		Most Recent	Year Earlier	Yr-On-Yr Change
Employed residents (1,000)-City	Jun-15	1,290.5	1,277.3	1.0%
Employed residents (1,000)-MSA	Jun-15	4,664.4	4,612.5	1.1%
Labor force (1,000)-City	Jun-15	1,385.7	1,387.0	-0.1%
Labor force (1,000)-MSA	Jun-15	4,963.3	4,967.4	-0.1%
Unemployment rate-City	Jun-15	6.9	7.9	-1.0
Unemployment rate-MSA	Jun-15	6.0	7.1	-1.1
Labor force participation rate-statewide	Jun-15	64.4	64.8	-0.4
Total private payroll jobs (1,000)-City	Jun-15	1,207.9	1,192.6	1.3%
Educational & health services	Jun-15	244.1	235.3	3.7%
Professional & business services	Jun-15	288.0	279.7	2.9%
Transportation, warehousing, & utilities	Jun-15	73.7	71.6	2.9%
Retail trade	Jun-15	101.8	100.1	1.7%
Leisure & hospitality	Jun-15	137.1	136.3	0.5%
Construction	Jun-15	27.5	26.8	2.6%
Information	Jun-15	35.0	34.6	1.1%
Wholesale trade	Jun-15	45.4	45.3	0.2%
Natural resources & mining	Jun-15	0.3	0.2	8.2%
Other services	Jun-15	66.6	68.8	-3.1%
Manufacturing	Jun-15	61.6	63.9	-3.5%
Financial activities	Jun-15	126.9	129.9	-2.3%
Unemployment insurance claims-Cook County	Jun-15	18,990	20,229	-6.1%
New hires (1,000, seas. adjusted)-Midwest	Jun-15	1,182	1,044	13.2%
Online job postings-Cook County	Q2-2015	195,526	N/A*	N/A*
Leading Economic Index (2004=100)-Nt'l	Jun-15	123.6	N/A**	N/A**
Consumer Sentiment Index-Nt'l	Aug-15	92.9	82.5	10.4
Consumer Confidence (1985=100)-Nt'l	Jul-15	90.9	90.3	0.6
Architecture Billings Index-Nt'l	Jun-15	55.7	53.5	2.2
Producer Price Index (1982=100, seas. adjusted)-Nt'l	Jul-15	196.7	201.8	-5.1
New automobile sales (thousands)-Nt'l	Jul-15	485.4	479.3	1.3%
New truck sales (thousands)-Nt'l	Jul-15	700.8	638.3	9.8%
Freight Transportation Services Index (2000=100)-Nt'l	Jun-15	121.9	119.2	2.7
Midwest Economy Index-Midwest	Jun-15	-0.02	0.61	-0.63
Exports (\$B)-State of Illinois	Jun-15 YTD	32.1	34.5	-6.9%
GRP (est., 2013 \$B)-MSA	2013	573.7	558.3	2.8%

(cont.)

Green = Improving; Red = Worsening

Indicator	Date	Month/Quarter			
		Most Recent	Year Earlier	Yr-On-Yr Change	
BUSINESS ACTIVITY	Chicago Business Barometer (seas. adjusted)-MSA	Jul-15	54.7	52.6	2.1
	Consumer Price Index (CPI-U; 1982-84=100)-MSA	Jun-15	228.8	230.5	-1.6
	Air cargo tonnage-ORD+MDW	Jun-15	146,438	136,782	7.1%
	Venture capital rounds-MSA	Q2 2015	18	25	-28.0%
	Venture capital investment (\$M)-MSA	Q2 2015	106.6	152.1	-29.9%
	Major business expansions-City	Aug-15 YTD	109	N/A	N/A
	Major business expansions-MSA	Aug-15 YTD	224	N/A	N/A
	Digital startup funding (\$M)-MSA	2014	1,585	1,053	50.5%
	Active manufacturing licenses-City	Aug-15	911	979	-6.9%
REAL ESTATE	Population (millions)-City	Jul-14	2.722	2.722	0.0%
	Population (millions)-MSA	Jul-14	9.555	9.545	0.1%
	Cost of Living Index-City	Q1 2015	114.6	117.5	-2.9
	Case Shiller Home Price Index-MSA	May-15	130.8	128.0	2.9
	New private residential building permits (units)-City	Jun-15 YTD	2,891	3,362	-14.0%
	New private residential building permits (units)-MSA	Jun-15 YTD	7,566	7,642	-1.0%
	Housing starts (1,000)-Midwest	Jun-15	145	200	-27.5%
	Home sales-City	Jun-15	3,110	2,846	9.3%
	Median home sale price (\$)-City	Jun-15	290,000	275,000	5.5%
TOURISM	Office vacancy rate-downtown	Q2 2015	12.2	13.2	-1.0
	Office vacancy rate-suburbs	Q2 2015	19.0	19.3	-0.3
	Annual visitors (millions)-City	2014	50.17	48.48	3.5%
	Hotel occupancy rate-City	Jun-15	87.5	88.1	-0.6
	Hotel average daily rate (\$)-City	Jun-15	247.49	237.07	4.4%
Air passengers (millions)-ORD+MDW	Jun-15	9.09	8.50	7.1%	

Green = Improving; Red = Worsening

Footnotes and Sourcing

*Data provider is continually improving its collection method, so year-over-year growth is not directly comparable nor attributable to a change in labor demand

**2015 data incorporates annual benchmark revisions to the composite economic indexes, so revised data are not directly comparable to prior years

Data is current as of 08/17/2015; preliminary estimates are subject to revision. Data is not adjusted for seasonality unless noted. The Chicago metropolitan statistical area (MSA) consists of a 14-county, tri-state region: Cook, DeKalb, DuPage, Grundy, Kane, Kendall, Lake, McHenry, and Will counties in Illinois; Jasper, Lake, Newton, and Porter counties in Indiana; and Kenosha County in Wisconsin. Midwest data reflects totals for Illinois, Indiana, Iowa, Kansas, Michigan, Minnesota, Missouri, Nebraska, North Dakota, Ohio, South Dakota, and Wisconsin. The Freight Transportation Services Index is a measure of month-to-month changes in the output of for-hire freight transportation service providers including trucking, rail, inland waterway vessels, pipeline, and air freighters; the index does not include international or coastal movements, private trucking, courier services, or the U.S. Postal Service. State of Illinois exports are measured by the U.S. Census Harmonized System (HS) origin of movement state-based series. Venture capital refers to cash investments by corporations and individuals into companies that have received at least one round of venture funding.

Sources (in order of reference): Illinois Department of Employment Security, U.S. Bureau of Labor Statistics, Chicago-Cook Workforce Partnership analysis of Burning Glass data, The Conference Board, Thomson Reuters/University of Michigan, American Institute of Architects, U.S. Bureau of Economic Analysis, U.S. Bureau of Transportation Statistics, Federal Reserve Bank of Chicago, USA Trade Online, EMSI, Institute for Supply Management, Chicago Department of Aviation, DJX VentureSource, World Business Chicago, Built in Chicago, City of Chicago, U.S. Census Bureau, Council for Community and Economic Research, S&P Dow Jones, Illinois Association of Realtors, CBRE, Choose Chicago analysis of Smith Travel Research data