

Chicago by the Numbers Revised October 20, 2015

11,888



New Jobs-City
YOY Growth, August 2015

139



Business Expansions-City
September 2015 YTD

6.3%



Home Sales-City
YOY Growth, August 2015

8.1%



Air Passengers-City
YOY Growth, August 2015

Employment

YOY job growth by industry, city, August 2015

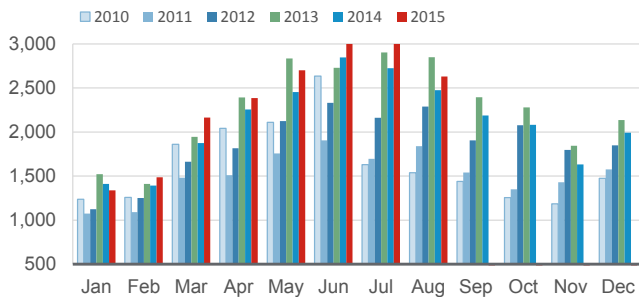
Professional & bus. services	2.1%	5,800
Educational and health services	2.3%	5,300
Transportation, whsng., & utilities	2.9%	2,100
Retail trade	1.5%	1,500
Construction	5.2%	1,500
Leisure & hospitality	0.4%	600
Wholesale trade	0.4%	200
Natural resources & mining	0.0%	0
Information	-0.6%	-200
Other services	-1.3%	-900
Manufacturing	-2.9%	-1,900
Financial activities	-1.7%	-2,200

Unemployment, select cities, August 2015

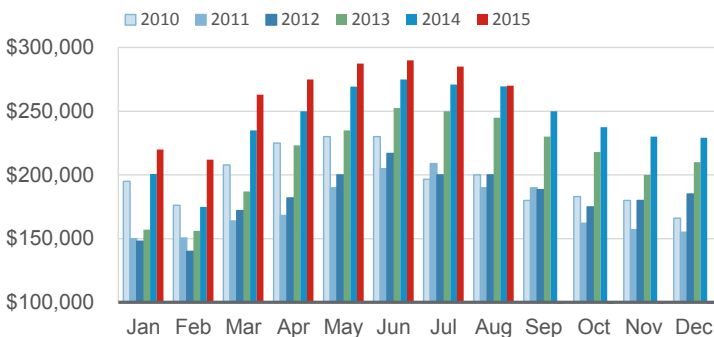
Los Angeles	7.8%	Chicago	6.4%
New York	5.3%	Houston	4.2%

Real Estate

Monthly home sales, city, 2010-2015

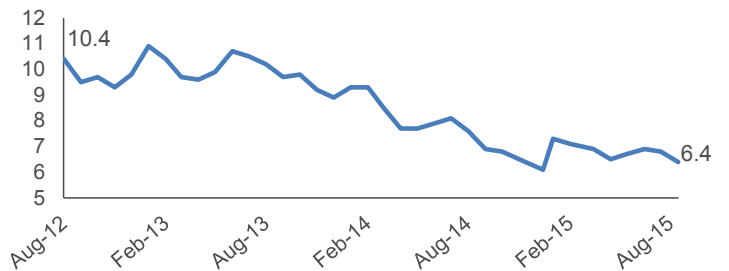


Median home sale price, city, 2010-2015

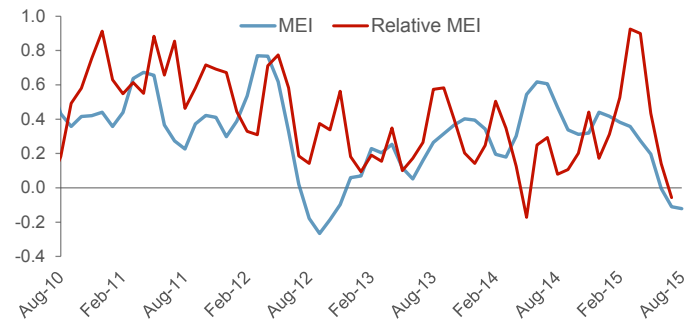


Business Activity

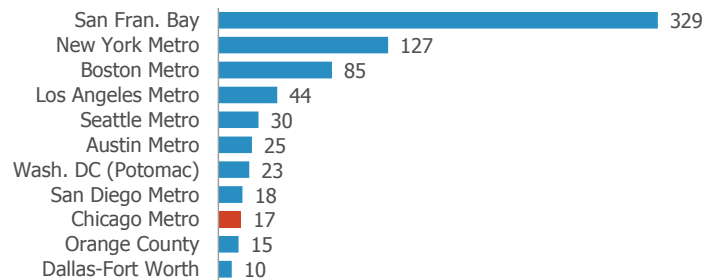
Unemployment rate, city, 2012-2015



Midwest Economy Index, 2010-2015

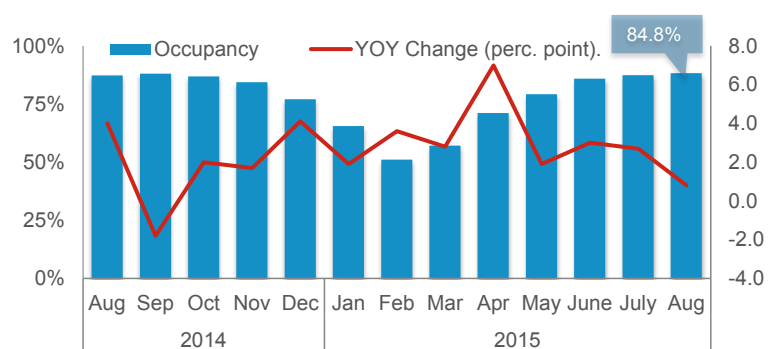


Investment deals with VC-backed co's, Q3 2015



Tourism

Average occupancy, Chicago hotels, 2014-2015



Indicator	Date	Month/Quarter		
		Most Recent	Year Earlier	Yr-On-Yr Change
Employed residents (1,000)-City	Aug-15	1,286.2	1,273.0	1.0%
Employed residents (1,000)-MSA	Aug-15	4,649.1	4,587.7	1.3%
Labor force (1,000)-City	Aug-15	1,374.0	1,378.0	-0.3%
Labor force (1,000)-MSA	Aug-15	4,922.7	4,924.2	-0.03%
Unemployment rate-City	Aug-15	6.4	7.6	-1.2
Unemployment rate-MSA	Aug-15	5.6	6.8	-1.3
Labor force participation rate-Illinois	Aug-15	64.4	64.7	-0.3
Total private payroll jobs (1,000)-City	Aug-15	1,211.6	1,199.7	1.0%
Professional & business services	Aug-15	287.6	281.8	2.1%
Educational & health services	Aug-15	237.5	232.2	2.3%
Leisure & hospitality	Aug-15	75.7	73.6	2.9%
Transportation, warehousing, & utilities	Aug-15	101.4	99.9	1.5%
Retail trade	Aug-15	30.4	28.9	5.2%
Construction	Aug-15	138.9	138.3	0.4%
Information	Aug-15	46.0	45.8	0.4%
Wholesale trade	Aug-15	0.2	0.2	0.0%
Natural resources & mining	Aug-15	34.7	34.9	-0.6%
Other services	Aug-15	67.3	68.2	-1.3%
Manufacturing	Aug-15	62.6	64.5	-2.9%
Financial activities	Aug-15	129.3	131.5	-1.7%
Unemployment insurance claims-Cook County	Sep-15	14,753	15,293	-3.5%
New hires (1,000, seas. adjusted)-Midwest	Aug-15	1,086	1,047	3.7%
Online job postings-Cook County	Q3-2015	167,921	N/A*	N/A*
Leading Economic Index (2004=100)-Nt'l	Aug-15	123.7	N/A**	N/A**
Consumer Sentiment Index-Nt'l	Sep-15	87.2	84.6	2.6
Consumer Confidence (1985=100)-Nt'l	Sep-15	103.0	86.0	17.0
Architecture Billings Index-Nt'l	Aug-15	49.1	53.0	-3.9
Producer Price Index (1982=100, seas. adjusted)-Nt'l	Sep-15	193.1	201.3	-8.2
New automobile sales (thousands)-Nt'l	Sep-15	445.8	412.0	8.2%
New truck sales (thousands)-Nt'l	Sep-15	692.1	566.6	22.1%
Freight Transportation Services Index (2000=100)-Nt'l	Aug-15	123.5	120.9	2.6
Midwest Economy Index-Midwest	Aug-15	-0.12	0.47	-0.59
Exports (\$B)-Illinois	Aug-15 YTD	42.3	45.6	-7.2%
GRP (est., 2013 \$B)-MSA	2013	573.7	558.3	2.8%

(cont.)

Green = Improving; Red = Worsening

Chicago by the Numbers

Revised October 20, 2015

Indicator	Date	Month/Quarter		
		Most Recent	Year Earlier	Yr-On-Yr Change
BUSINESS ACTIVITY Chicago Business Barometer (seas. adjusted)-MSA	Sep-15	48.7	60.5	-11.8
Consumer Price Index (CPI-U; 1982-84=100)-MSA	Sep-15	228.8	229.8	-1.0
Air cargo tonnage-ORD+MDW	Aug-15	140,895	136,943	2.9%
Venture capital rounds-MSA	Q3 2015	17	26	-34.6%
Venture capital investment (\$M)-MSA	Q3 2015	199.4	203.1	-1.8%
Major business expansions-City	Sep-15 YTD	139	N/A	N/A
Major business expansions-MSA	Sep-15 YTD	300	N/A	N/A
Digital startup funding (\$M)-MSA	2014	1,585	1,055	50.2%
Active manufacturing licenses-City	Sep-15	954	967	-1.3%
REAL ESTATE Population (millions)-City	Jul-14	2.722	2.722	0.0%
Population (millions)-MSA	Jul-14	9.555	9.545	0.1%
Cost of Living Index-City	Q2 2015	115.7	116.5	-0.8
S&P/Case Shiller Home Price Index-MSA	Jul-15	133.4	131.1	2.3
New private residential building permits (units)-City	Aug-15 YTD	3,632	4,165	-12.8%
New private residential building permits (units)-MSA	Aug-15 YTD	10,201	10,409	-2.0%
Housing starts (1,000)-Midwest	Aug-15	157	180	-12.8%
Home sales-City	Aug-15	2,629	2,474	6.3%
Median home sale price (\$)-City	Aug-15	270,000	269,500	0.2%
Office vacancy rate-downtown	Q2 2015	12.2	13.2	-1.0
Office vacancy rate-suburbs	Q2 2015	19.0	19.3	-0.3
TOURISM Annual visitors (millions)-City	2014	50.17	48.48	3.5%
Hotel occupancy rate-City	Aug-15	84.8	88.1	-3.3%
Hotel average daily rate (\$)-City	Aug-15	203.53	197.39	3.1%
Air passengers (millions)-ORD+MDW	Aug-15	9.37	8.66	8.1%

Green = Improving; Red = Worsening

Footnotes and Sourcing

*Data provider is continually improving its collection method, so year-over-year growth is not directly comparable nor attributable to a change in labor demand

**2015 data incorporates annual benchmark revisions to the composite economic indexes, so revised data are not directly comparable to prior years

Data is current as of 10/20/2015; preliminary estimates are subject to revision. Data is not adjusted for seasonality unless noted. The Chicago metropolitan statistical area (MSA) consists of a 14-county, tri-state region: Cook, DeKalb, DuPage, Grundy, Kane, Kendall, Lake, McHenry, and Will counties in Illinois; Jasper, Lake, Newton, and Porter counties in Indiana; and Kenosha County in Wisconsin. Midwest data reflects totals for Illinois, Indiana, Iowa, Kansas, Michigan, Minnesota, Missouri, Nebraska, North Dakota, Ohio, South Dakota, and Wisconsin. The Freight Transportation Services Index is a measure of month-to-month changes in the output of for-hire freight transportation service providers including trucking, rail, inland waterway vessels, pipeline, and air freighters; the index does not include international or coastal movements, private trucking, courier services, or the U.S. Postal Service. State of Illinois exports are measured by the U.S. Census Harmonized System (HS) origin of movement state-based series. Venture capital refers to cash investments by corporations and individuals into companies that have received at least one round of venture funding.

Sources (in order of reference): Illinois Department of Employment Security, U.S. Bureau of Labor Statistics, Chicago-Cook Workforce Partnership analysis of Burning Glass data, The Conference Board, Thomson Reuters/University of Michigan, American Institute of Architects, U.S. Bureau of Economic Analysis, U.S. Bureau of Transportation Statistics, Federal Reserve Bank of Chicago, USA Trade Online, EMSI, Institute for Supply Management, Chicago Department of Aviation, DJX VentureSource, World Business Chicago, Built in Chicago, City of Chicago, U.S. Census Bureau, Council for Community and Economic Research, S&P Dow Jones, Illinois Association of Realtors, CBRE, Choose Chicago analysis of Smith Travel Research data